

LEDX.NO

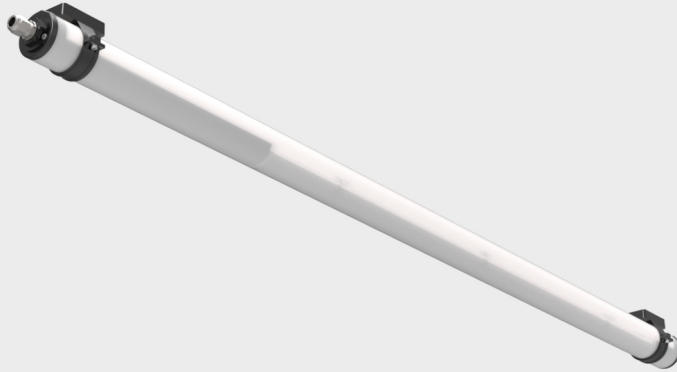
LED expert AS
Torpumveien 543
1788 Halden

E-post: post@ledx.no
Tlf: 909 54 606

A70

IP66/IP68

ZONE 1/21



Description

Robust tubular luminaire for use in hazardous areas for ATEX zone 1/21. Body made of highly resistant polycarbonate tube. The luminaire end caps are made of special plastic with glass fibre and together with the silicone gasket guarantee high splash and dust resistance IP66 as well as immersion resistance IP68 up to 15 m as well as high impact resistance IK10. Equipped with certified electronic components – the encapsulated LED module and driver guarantee high efficiency up to 139 lm/W and an LED lifetime of 45,000 h even at high temperatures. Suitable for ambient temperatures from -20 °C to +50 °C. The luminaire is mounted on the ceiling or wall with plastic or stainless steel brackets.

Specifications

Operating voltage:

110-254 V / 50/60 Hz AC, 220-250 V DC

Source:

LED, 4000K, CRI +80

Housing:

Tube with outer diameter 70 mm and wall thickness 4 mm made of clear PC – IK10 (polycarbonate)

Fastening:

Fixing to the ceiling or wall of the illuminated space or hanging using mounting brackets (not included)

Connection:

Screwless three-pole terminal block, max. conductor cross-section 4 mm²


Standard equipment:


M20 gland for cable diameter 7-13 mm and 1x plug

Calculated lifetime – LED modules:

L80B50 Ta 50 – 45 000 h

(FTZU 17 ATEX 0052X)

 II 2G Ex db eb mb op is IIC T4 Gb

 II 2D Ex tb op is IIC T62°C Db

On order

3000K/4000K/6000K – chromaticity temperature

1F – single-phase connection, max. conductor cross-section 4 mm²

Variants

	Luminous flux (lm)	Luminous flux in an emergency mode (lm)	Specific power luminaires	Power input (W)	Ta (°C)	Tc (K)	Dimensions A x B x C (mm)
D-2750-118-4K, IP66/ IP68	2107	–	132 lm/W	16	-20°C≤ta≤50°C	4000	1149 x 70 x 70
D-4000-118-4K, IP66/ IP68	3061	–	109 lm/W	28	-20°C≤ta≤50°C	4000	1149 x 70 x 70
D-5500-136-4K, IP66/ IP68	4175	–	139 lm/W	30	-20°C≤ta≤50°C	4000	1709 x 70 x 70
D-8000-136-4K, IP66/ IP68	5985	–	117 lm/W	51	-20°C≤ta≤50°C	4000	1709 x 70 x 70
WOD-2750-118-4K, IP66/ IP68	2107	–	132 lm/W	16	-20°C≤ta≤50°C	4000	1149 x 70 x 70
WOD-4000-118-4K, IP66/ IP68	3061	–	109 lm/W	28	-20°C≤ta≤50°C	4000	1149 x 70 x 70
WOD-5500-136-4K, IP66/ IP68	4175	–	139 lm/W	30	-20°C≤ta≤50°C	4000	1709 x 70 x 70
WOD-8000-136-4K, IP66/ IP68	5985	–	117 lm/W	51	-20°C≤ta≤50°C	4000	1709 x 70 x 70

Luminous flux and luminaire power tolerance ±10%